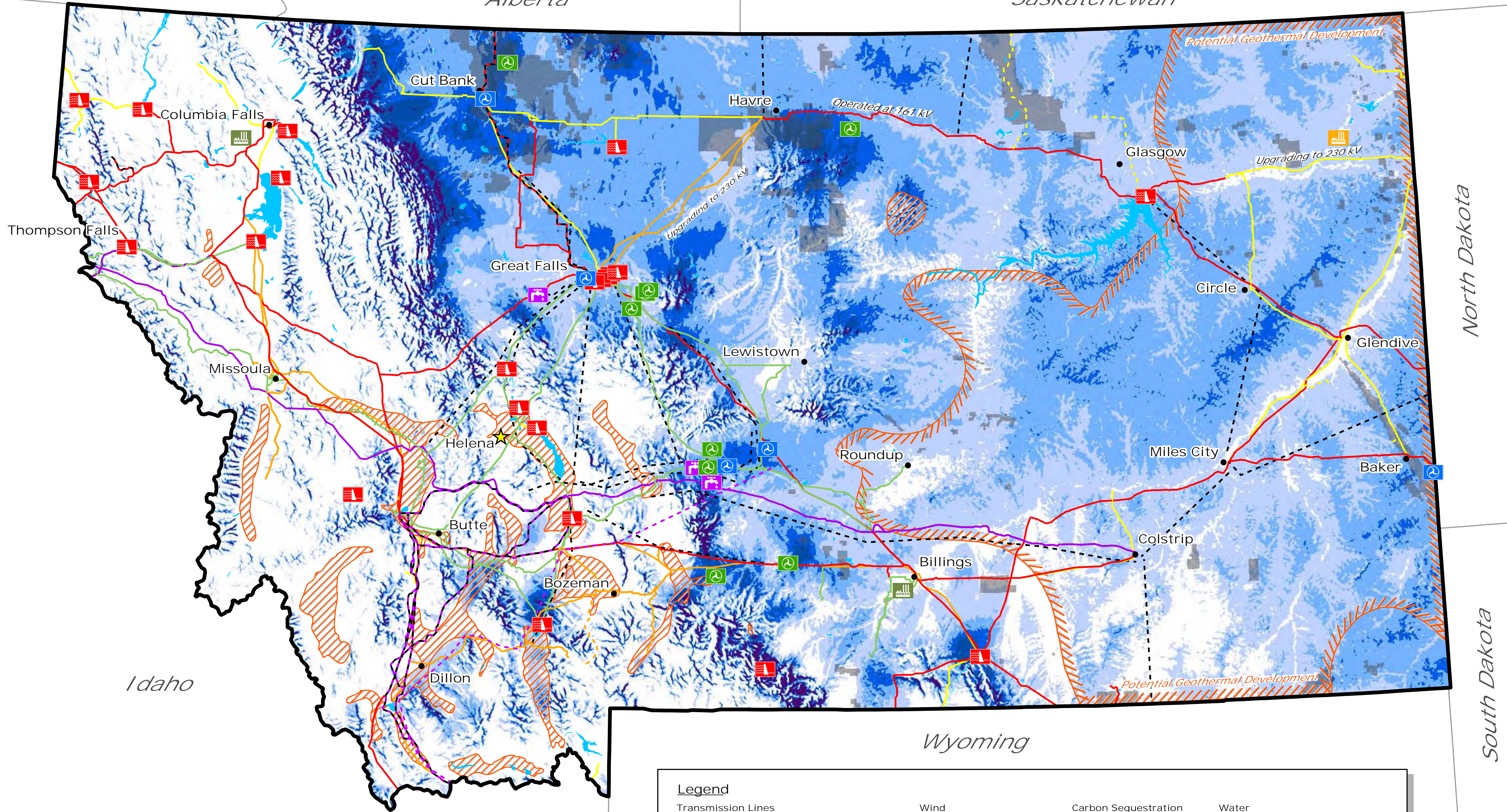


# Renewable Energy Resources

British Columbia

Alberta

Saskatchewan



North Dakota

South Dakota

Idaho

Wyoming

### Legend

#### Transmission Lines

| In Service | In Progress | Being Planned |
|------------|-------------|---------------|
|            |             |               |
|            |             |               |
|            |             |               |
|            |             |               |
|            |             |               |

#### Wind

|                                    |                      |
|------------------------------------|----------------------|
|                                    | Operating Wind Farms |
|                                    | Planned Wind Farms   |
| <b>Wind Power Class</b>            |                      |
|                                    | 3                    |
|                                    | 4                    |
|                                    | 5                    |
|                                    | 6                    |
|                                    | 7                    |
| Watts/square meter @ 50m elevation |                      |

#### Carbon Sequestration

|                                 |                       |
|---------------------------------|-----------------------|
|                                 | CO2 Sink              |
| <b>Energy Recovery Projects</b> |                       |
|                                 | Waste Heat            |
|                                 | Methane Collection    |
| <b>Geothermal</b>               |                       |
|                                 | Potential Development |

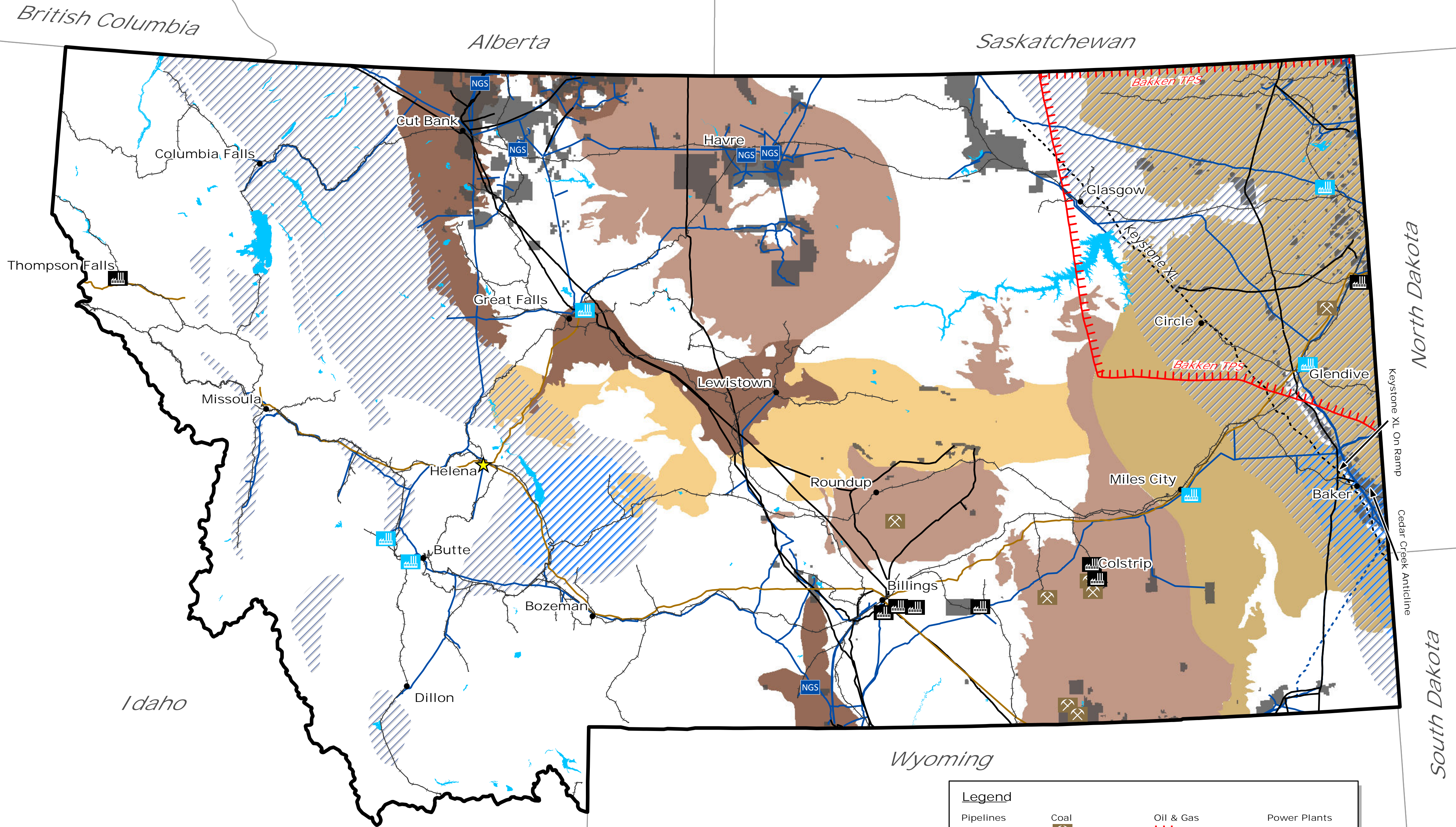
#### Water

|  |                              |
|--|------------------------------|
|  | Hydroelectric Dams           |
|  | Planned Pumped Hydroelectric |



Map Sources  
 Transmission Lines: Department of Environmental Quality  
 Wind Farms: Department of Environmental Quality  
 Wind Power Class: TrueWind Solutions (2002)  
 Potential Geothermal Development: Idaho National Engineering & Environmental Laboratory (2003)  
 CO2 Sinks: NatCarb (2008 Atlas - Oil & Gas Reservoirs)  
 Gas Storage Units: Board of Oil & Gas Conservation  
 Hydroelectric Dams: Department of Fish Wildlife and Parks  
 Pumped Hydroelectric: Department of Environmental Quality  
 Energy Recovery: Department of Environmental Quality

# Traditional Energy Resources



**Map Sources**  
 Pipelines: Department of Environmental Quality  
 Coal Mines: Department of Environmental Quality  
 Coal Shale Deposits: Montana State University (1974)  
 Bakken TPS (Bakken-Lodgepole Total Petroleum System): United States Geological Survey (2008)  
 Oil & Gas Fields: Board of Oil & Gas Conservation  
 Shale Gas Plays & Basins: US Energy Information Administration  
 Coal Power Plants: Department of Environmental Quality  
 Natural Gas Power Plants: Department of Environmental Quality  
 Natural Gas Storage Units: Board of Oil & Gas Conservation

| Legend             |                     |                      |                           |
|--------------------|---------------------|----------------------|---------------------------|
| <b>Pipelines</b>   | <b>Coal</b>         | <b>Oil &amp; Gas</b> | <b>Power Plants</b>       |
| <i>In Service</i>  | Coal Mines          | Bakken TPS           | Coal                      |
| Natural Gas        | Coal Shale Deposits | Oil & Gas Fields     | Natural Gas               |
| Crude Oil          | Bituminous          | Shale Gas Plays      |                           |
| Refined Oil        | Sub-bituminous      | Shale Gas Basins     |                           |
| <i>In Progress</i> | Lignite             | NGS                  | Natural Gas Storage Units |
| Natural Gas        | Oil-shale           |                      |                           |
| Crude Oil          | Railroads           |                      |                           |

0 5 10 20 30 40 Miles